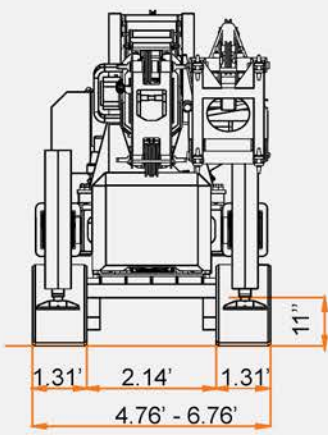
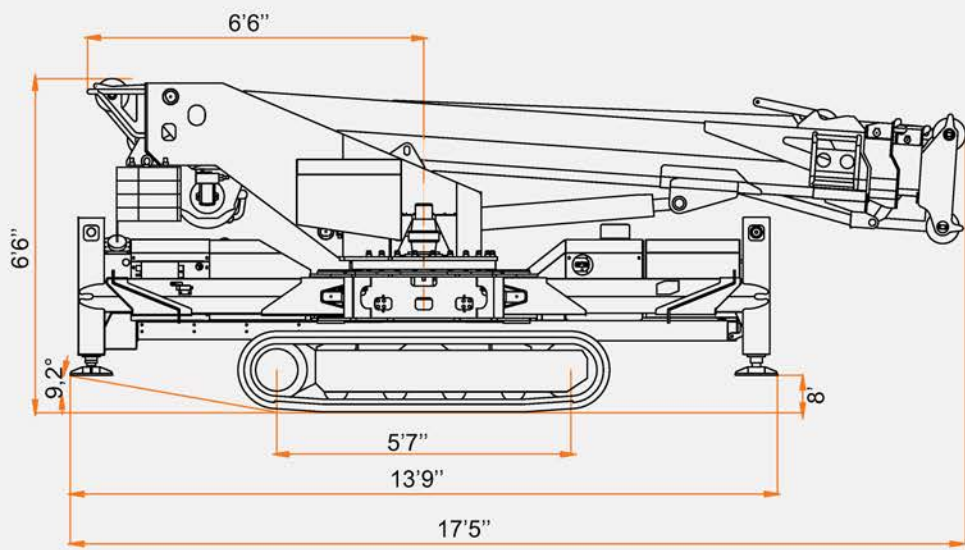
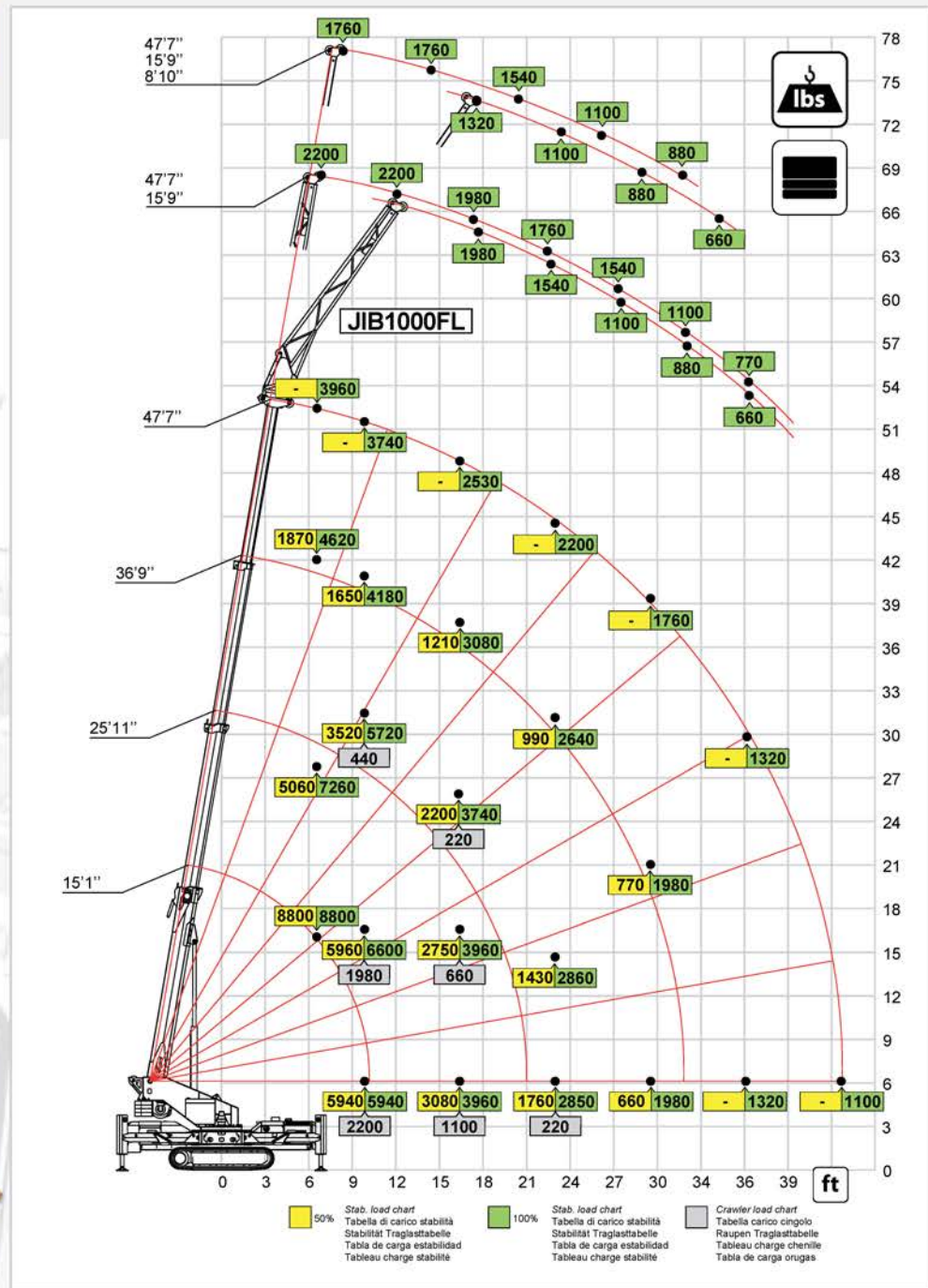




Dielco

CRANE SERVICE, INC.



SPX 1040




















8800 lbs

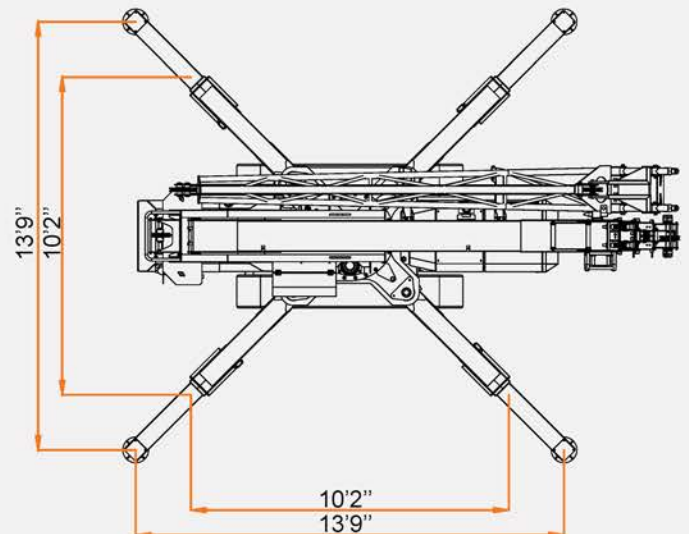


15'1" - 47'7"



15'9" - 24'7"

 16,314 lbs	 13889 lbs	 1676 lbs	 66 lbs (40 lbs Ball)	 Jib1000.1FL 683 lbs
 L x W x H 17'5" x 4'9" x 6'6"	 1.24 MPH	 25°		
 9900 lbs	 8.39 PSI			
 <p>Engine: 3 cylinders water cooled diesel, ISUZU mod. 3CB1, 2 rpm levels, EPA TIER 4 Motore: 3 cilindri diesel raffreddato a liquido, ISUZU mod. 3CB1, 2 livelli di regime, EPA TIER 4 Motor: Wassergekühlter 3 Zylinder Diesel Motor, ISUZU mod. 3CB1, 2 rpm, EPA TIER 4 Motor: Diesel 3 cilindros con refrigeración por aire, ISUZU mod. 3CB1, 2 niveles rpm, EPA TIER 4 Moteur: Diesel 3 cylindres, refroidissement à eau, ISUZU mod. 3CB1, accélérateur à 2 niveaux, EPA TIER 4</p>				
 8kW 240V-60Hz-AC 1F	 300 lbs			
Telescopic Boom: 1 base and 3 telescopic sections high-tensile structural steel. All sections synchronized and full power. Braccio Telescopico: 1 braccio principale e 3 telescopici in acciaio strutturale ad alta resistenza. Sfilo completamente idraulico e sincronizzato. Teleskopausleger: 1 Hauptausleger + 3 Hochwiderstand Stahl Teleskopausleger. Voll hydraulischer und teleskopierbarer Ausleger. Pluma Telescópica: 1 pluma principal y 3 telescópicas en acero de alta resistencia. Elementos sincronizados e hidráulicos. Flèche Télescopique: 1 flèche principale et 3 télescopiques en acier à haute résistance. Éléments synchronisés et hydrauliques.				
 360° 1 rpm	 -4°/80° 35°			
 15'1" - 47'7" 40"	 1980 lbs - 410' - Ø 5/16 in 98/180 ft/min.			





Dielco

CRANE SERVICE, INC.

SPX1040CDH-EXT



Technical Data

Specification & Capacities

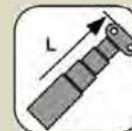


SPX1040CDH

S.N: _____



18,7kW/25,0Hp
26,9kW/36,0Hp (EXT)



4,6-14,5m



4000kg

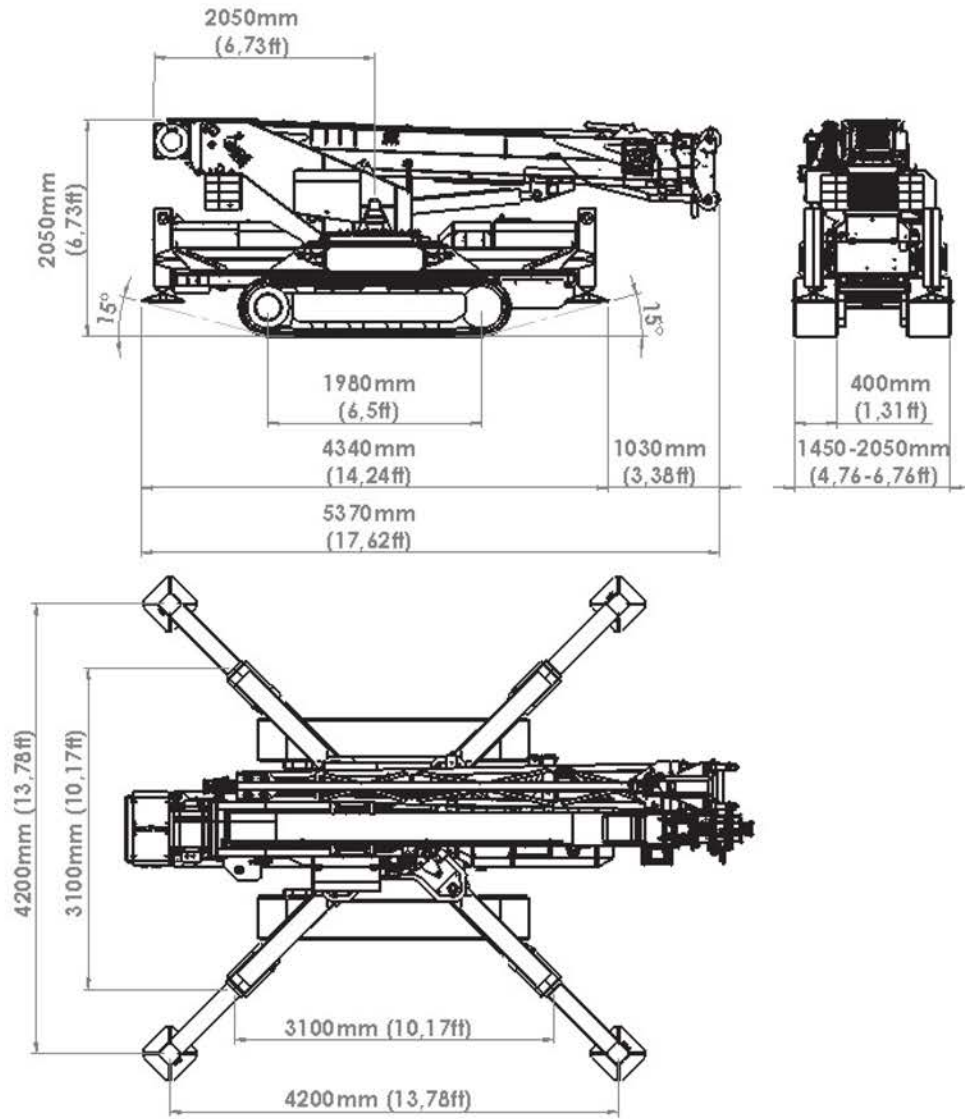


EN 13000 B30.5



SPX1040

SPX1040CDH-EXT





SPX1040CDH-EXT

SPX1040

		kg	lbs
		6300	13889
		760	1676
Tot.		7060	15565

	km/h	2,0
	mph	1,24
	25°	
	kg/cm ²	0,59
	lbs/ftq	1208
	kg	4500
	lbs	9921

	-4°/80°	35"
	360°	1,0 rpm
	m	4,6-14,5
	ft	15'1"-47'6"
		40"

	ISUZU 3CE1		26,9kW 36,0Hp
			DIESEL
			l
gal	5,28		



HOIST PERFORMANCE

SPX1040

Layer	Max Line Pull		Normal Line Speed		High Line Speed	
	kg	Lbs	m/min	ft/min	m/min	ft/min
1	1.204 (*)	2.653 (*)	41,4	136	77,4	254
2	1.120 (*)	2.470 (*)	44,5	146	83,2	273
3	1.048 (*)	2.311 (*)	47,5	156	88,8	291
4	985 (*)	2.170 (*)	50,6	166	94,6	310

(*) 1000kg [2200lbs] LMI limited

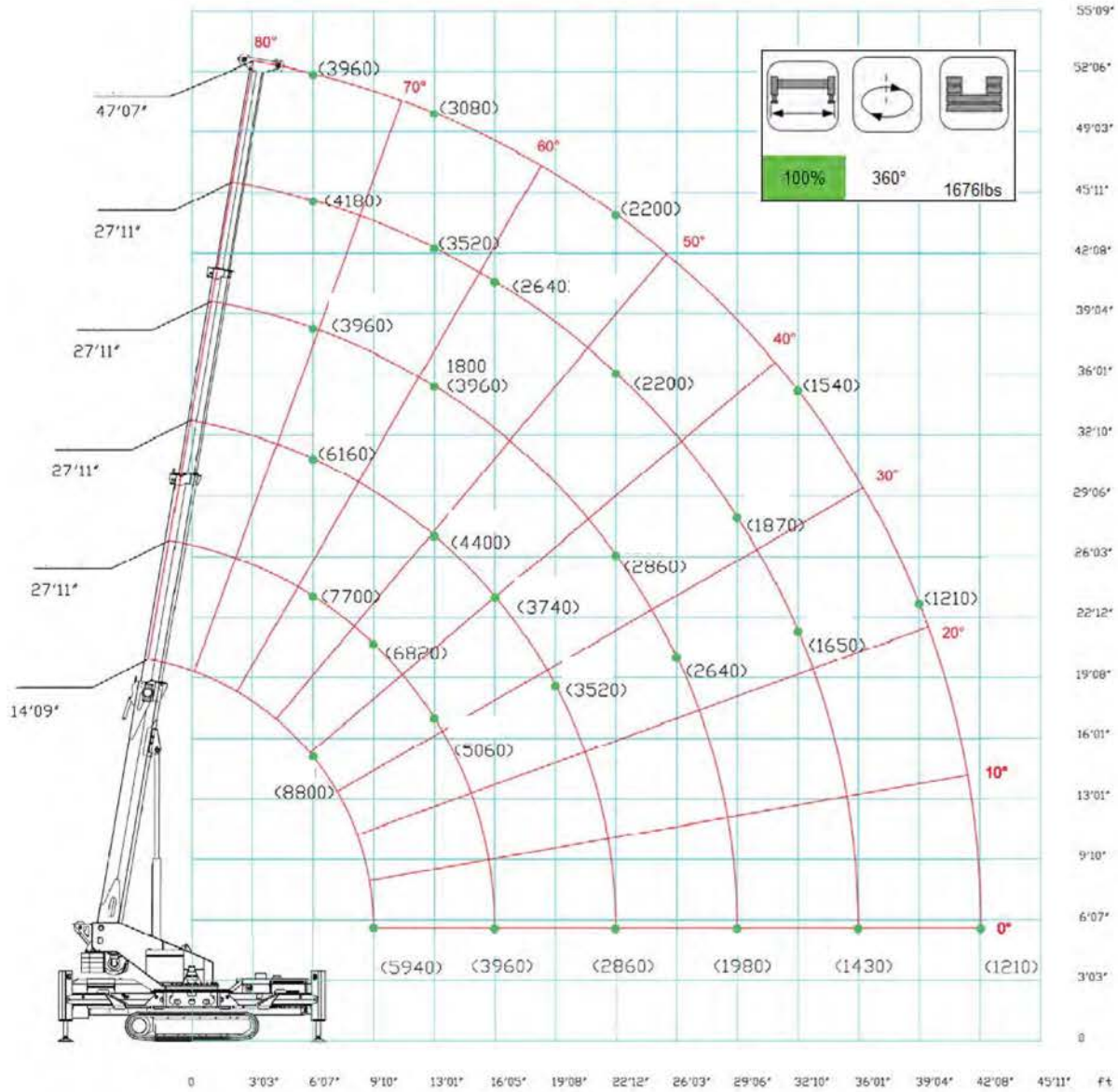
Wire Rope	Diameter		Tot. Length		Max Load	
	mm	in	m	ft	kg	lbs
19x7 right lang lay Non rotating	8	5/16"	125	410	5.435	11.957



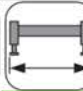
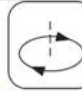
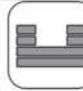
HOOK BLOCK

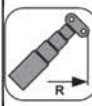
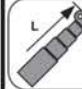
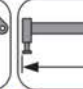
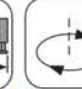
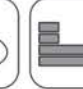
LOAD		No. of	
kg	lbs	Sheaves	Lines
4000	8818	2	4
3000	6614	2	3
2000	4409	1	2
1000	2205		1



SPX1040CDH – MAIN BOOM



	   														
	100%	360°	1676lbs												
	14,76	18,04	21,33	24,61	27,89	31,17	34,45	37,73	41,01	44,29	47,57				
6,56	8800	8140	7700	7260	6160	5720	5280	4620	4180	4070	3960				
9,84	5940	6600	6820	6160	5720	5060	4400	4180	3960	3850	3740				
13,12	4840	4840	5060	4620	4400	4180	3960	3740	3520	3410	3080				
16,40		3960	3960	3960	3740	3520	3520	3080	2640	2530	2530				
19,69				3300	3520	3300	3080	2860	2640	2420	2200				
22,97					2860	2860	2860	2640	2200	2200	2200				
26,25						2420	2640	2420	2200	1980	1980				
29,53							1980	1980	1870	1760	1760				
32,81								1760	1650	1540	1540				
36,09									1430	1430	1320				
39,37										1210	1210				
43,31											1210				

	   								
	50%	360°	1676lbs						
	14,76	18,04	21,33	24,61	27,89	31,17	34,45	37,73	
6,56	8800	7260	6160	5060	3740	2860	2090	1870	
9,84	5940	5940	5500	4290	3410	2530	1760	1650	
13,12	4400	4400	4070	3300	2640	2090	1540	1430	
16,40		3190	3190	2750	2200	1760	1430	1210	
19,69				2310	2090	1650	1210	1100	
22,97					1760	1430	1100	990	
26,25						1210	990	880	
29,53							770	770	
32,81								660	

lbs/ft